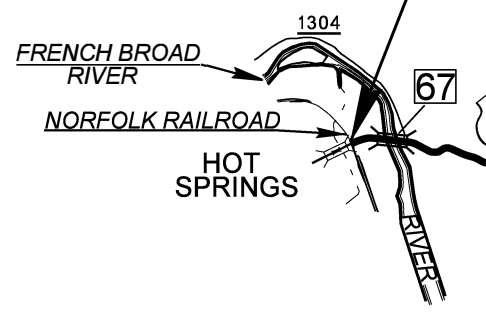
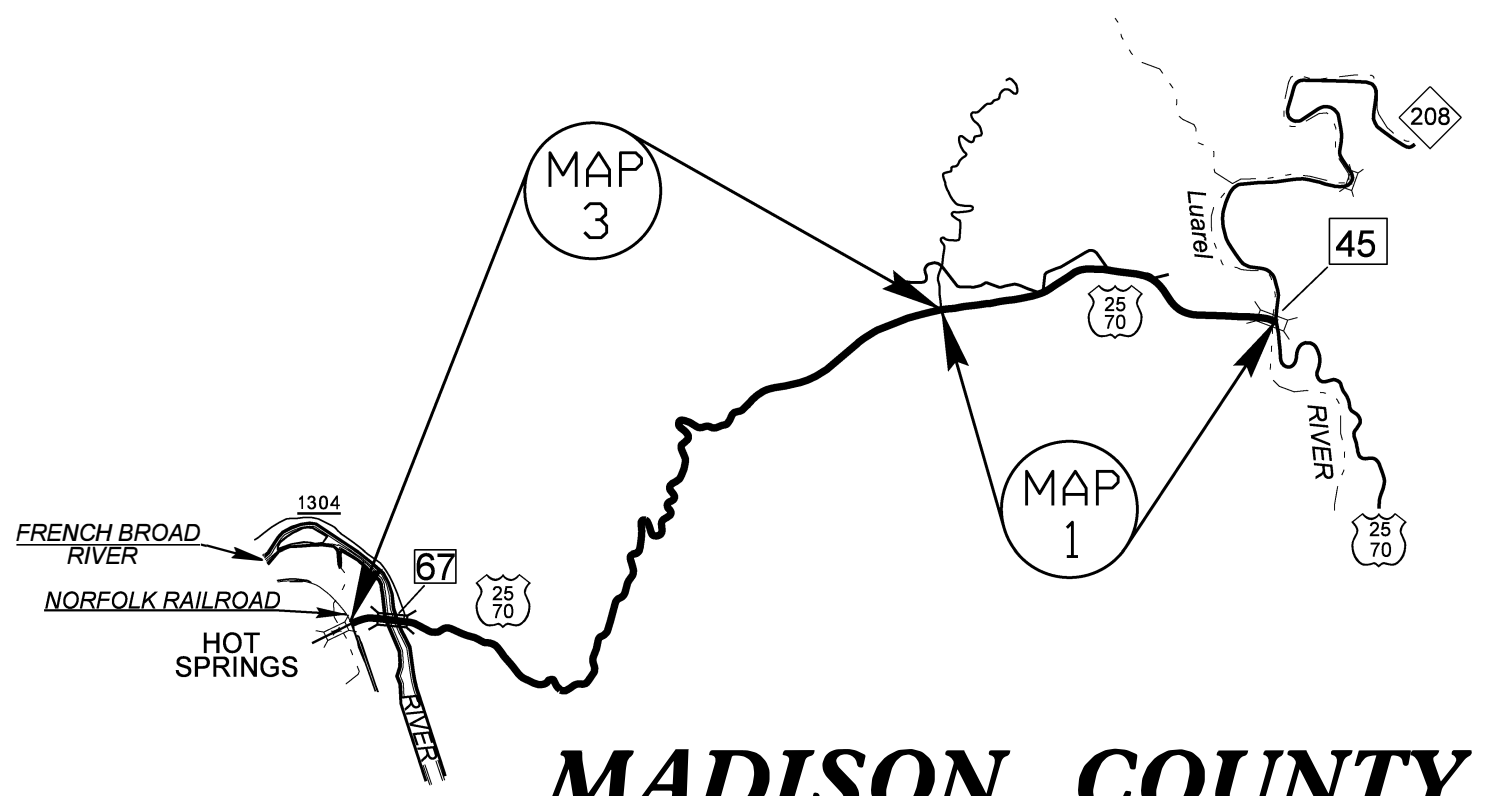
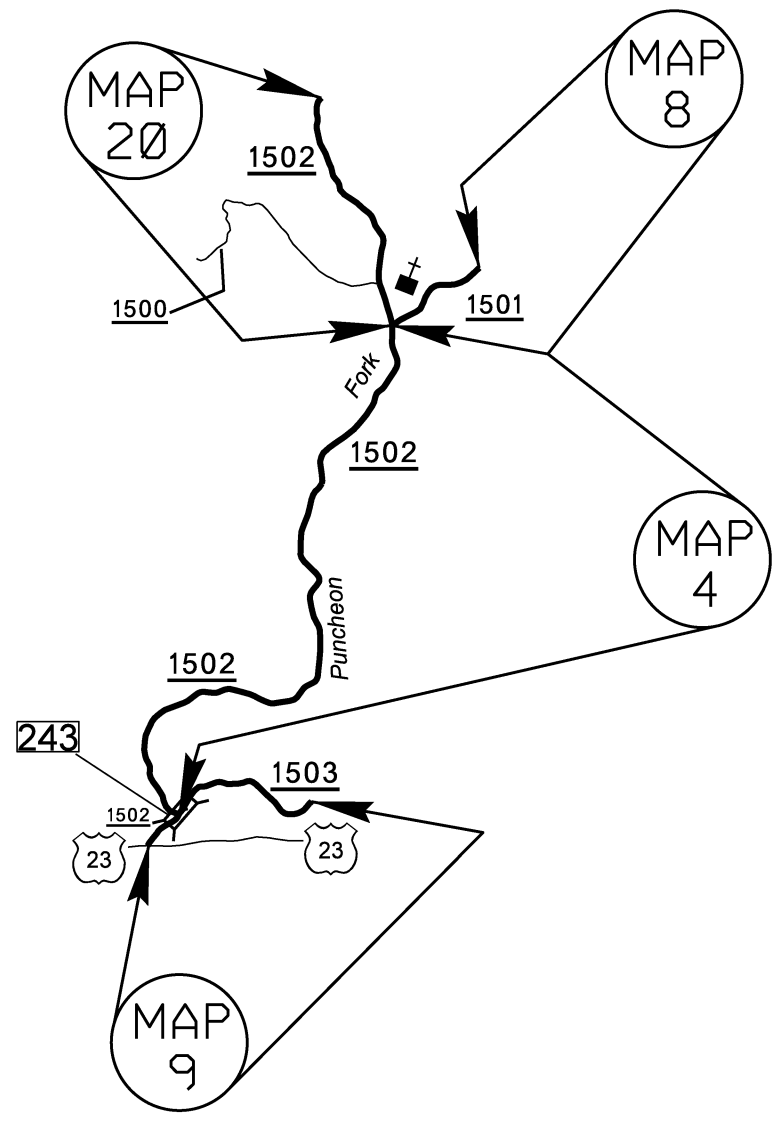
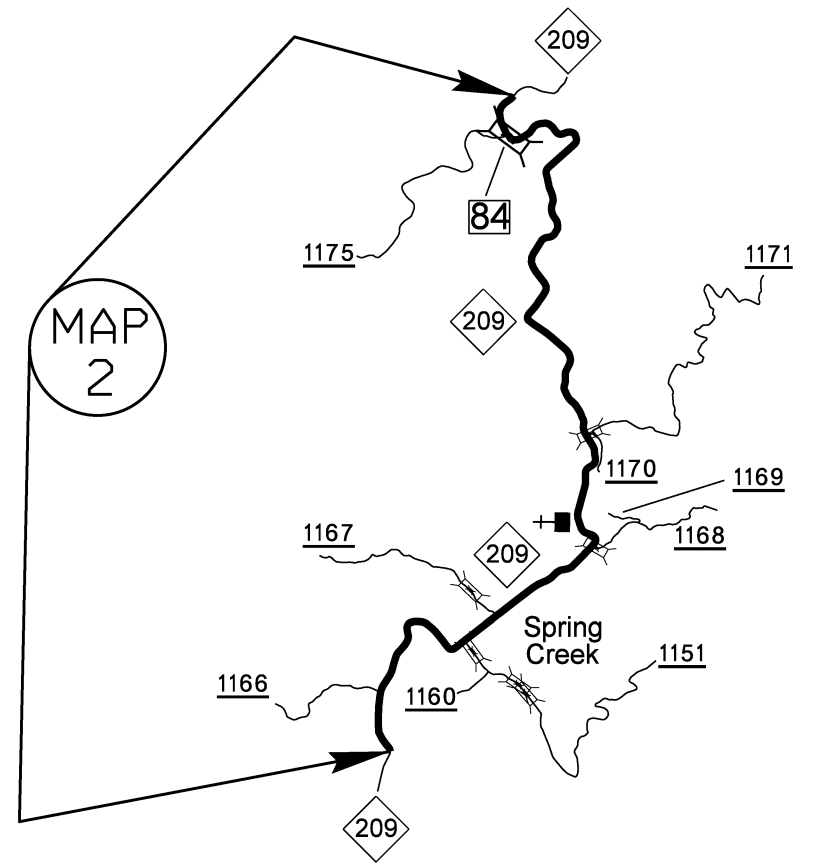
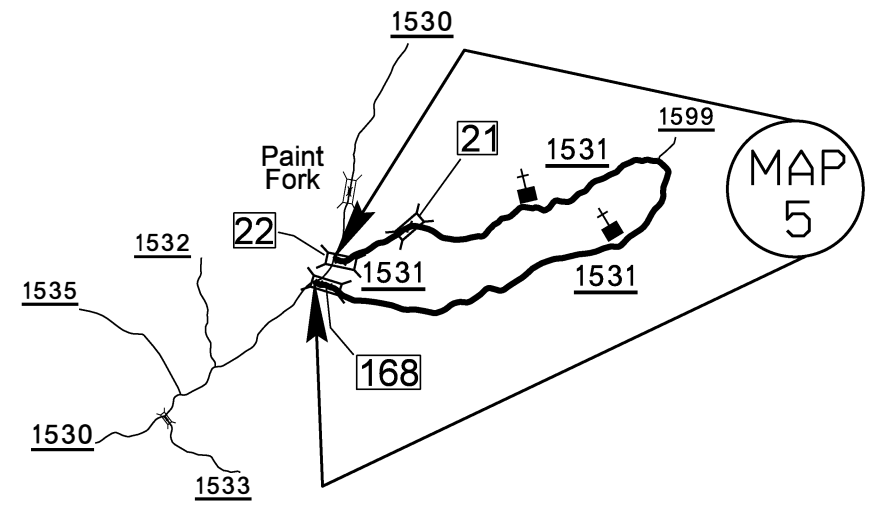


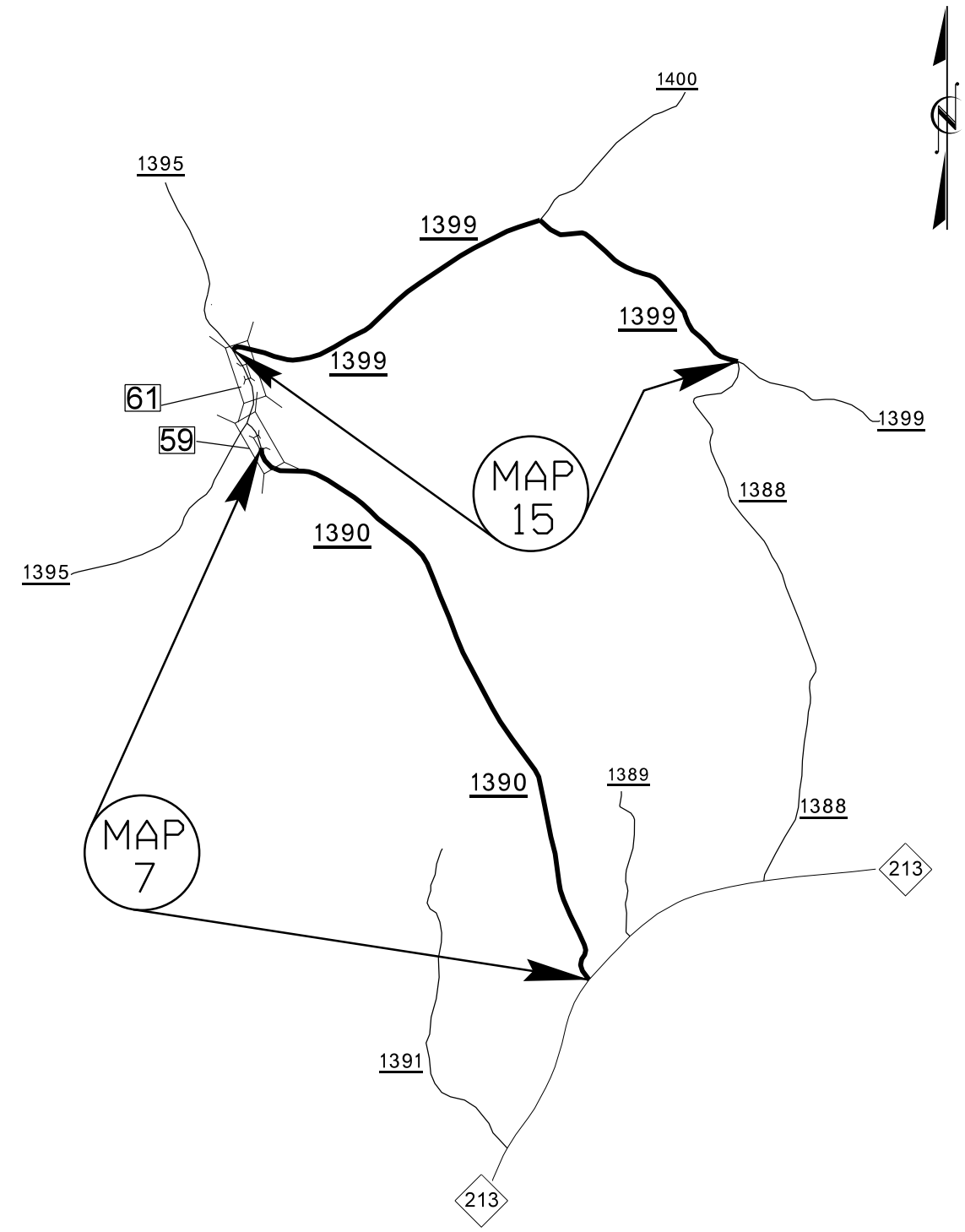
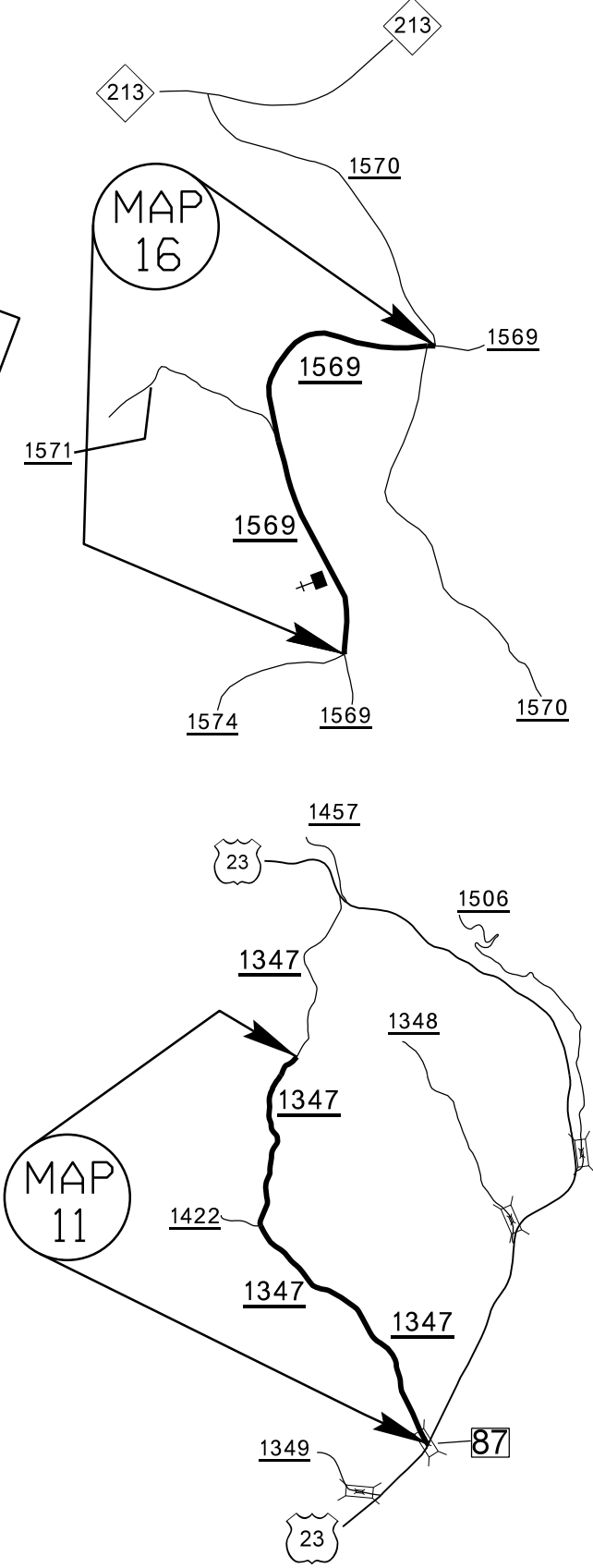
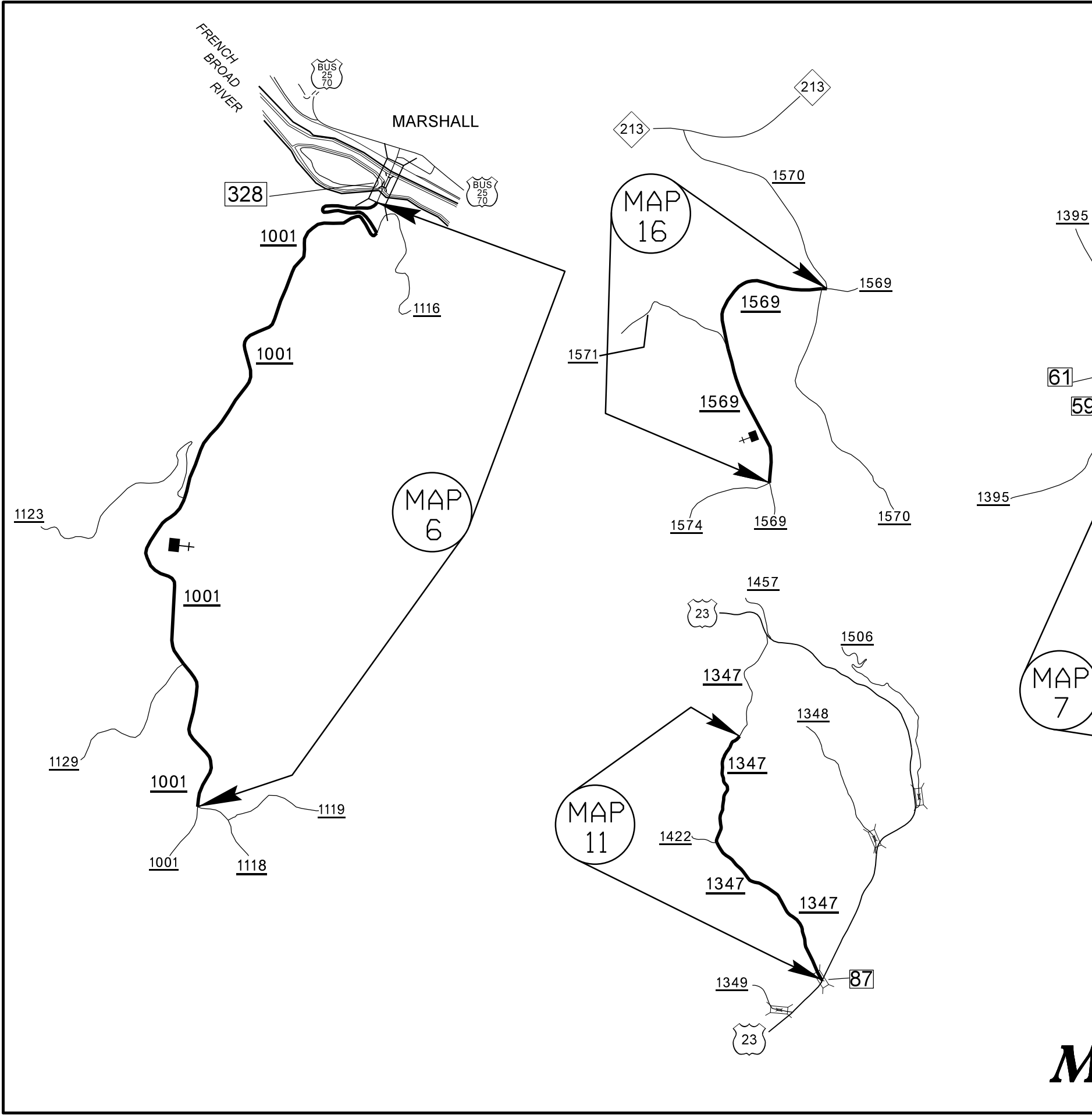
PROJECT NO.	SHEET NO.	TOTAL NO.
2019CPT.13.03.10571, 2019CPT.13.03.20571	1	17



MADISON COUNTY

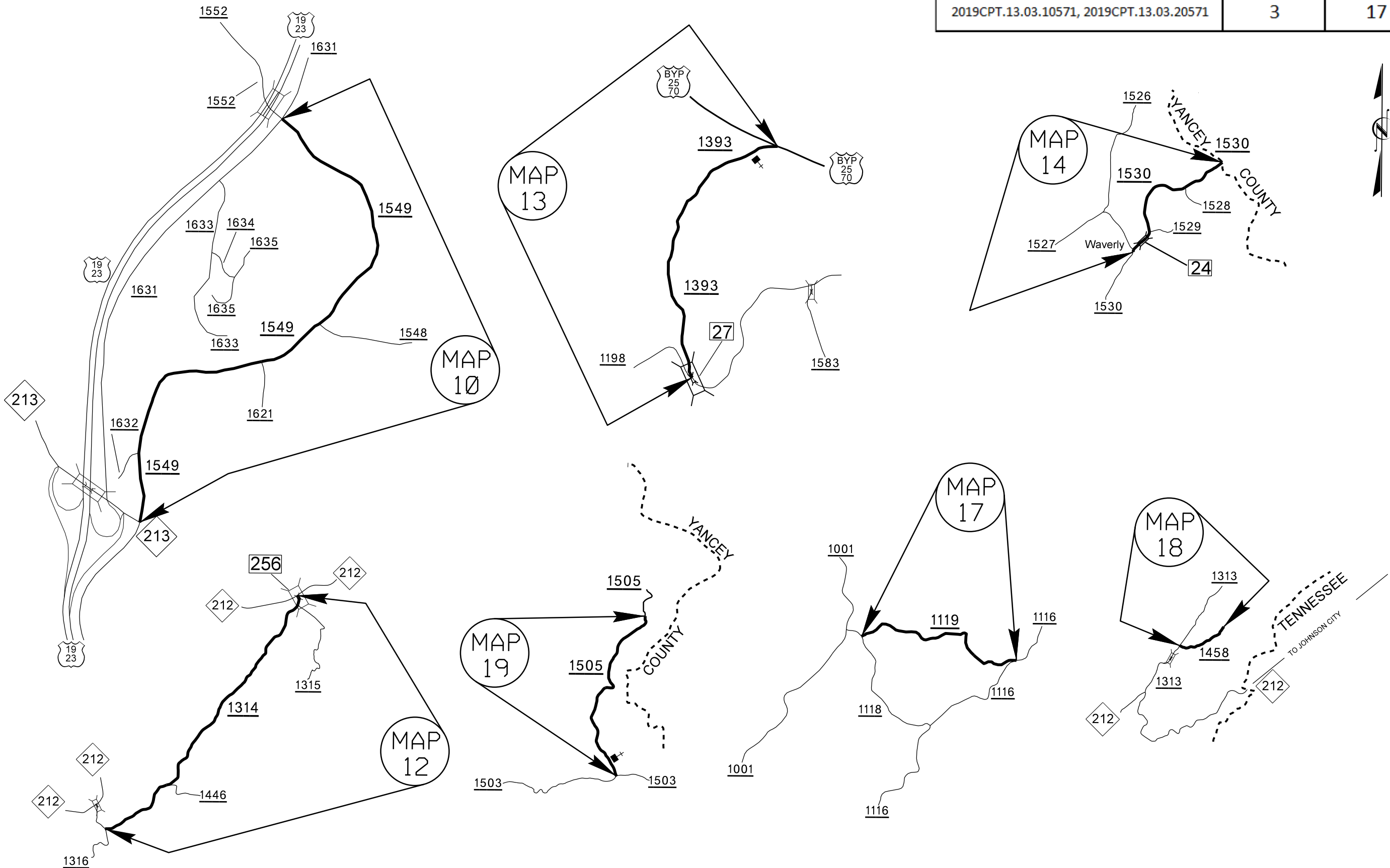


PROJECT NO.	SHEET NO.	TOTAL NO.
2019CPT.13.03.10571, 2019CPT.13.03.20571	2	17

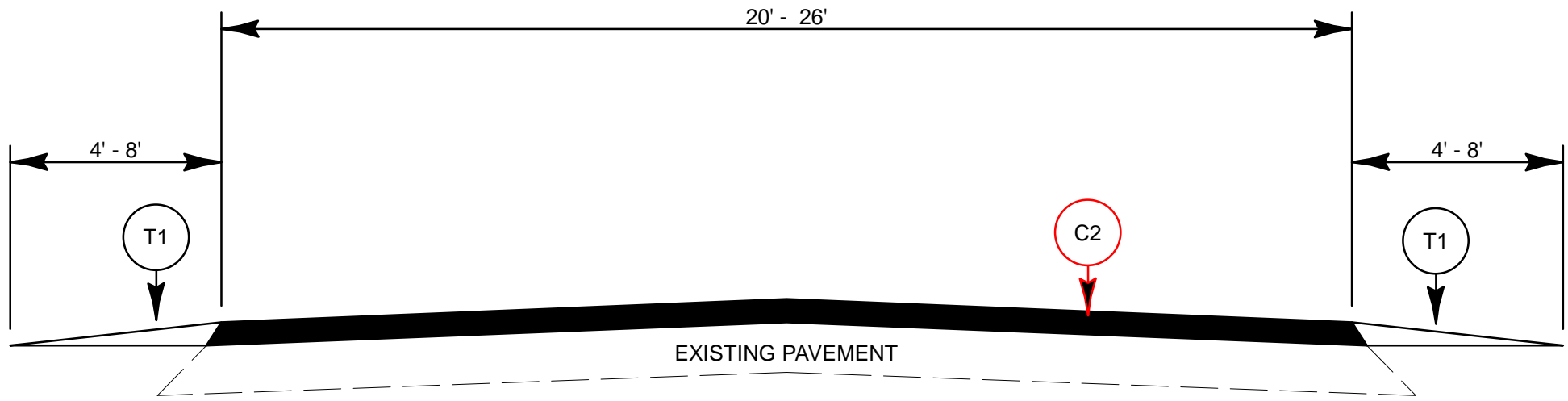


MADISON COUNTY

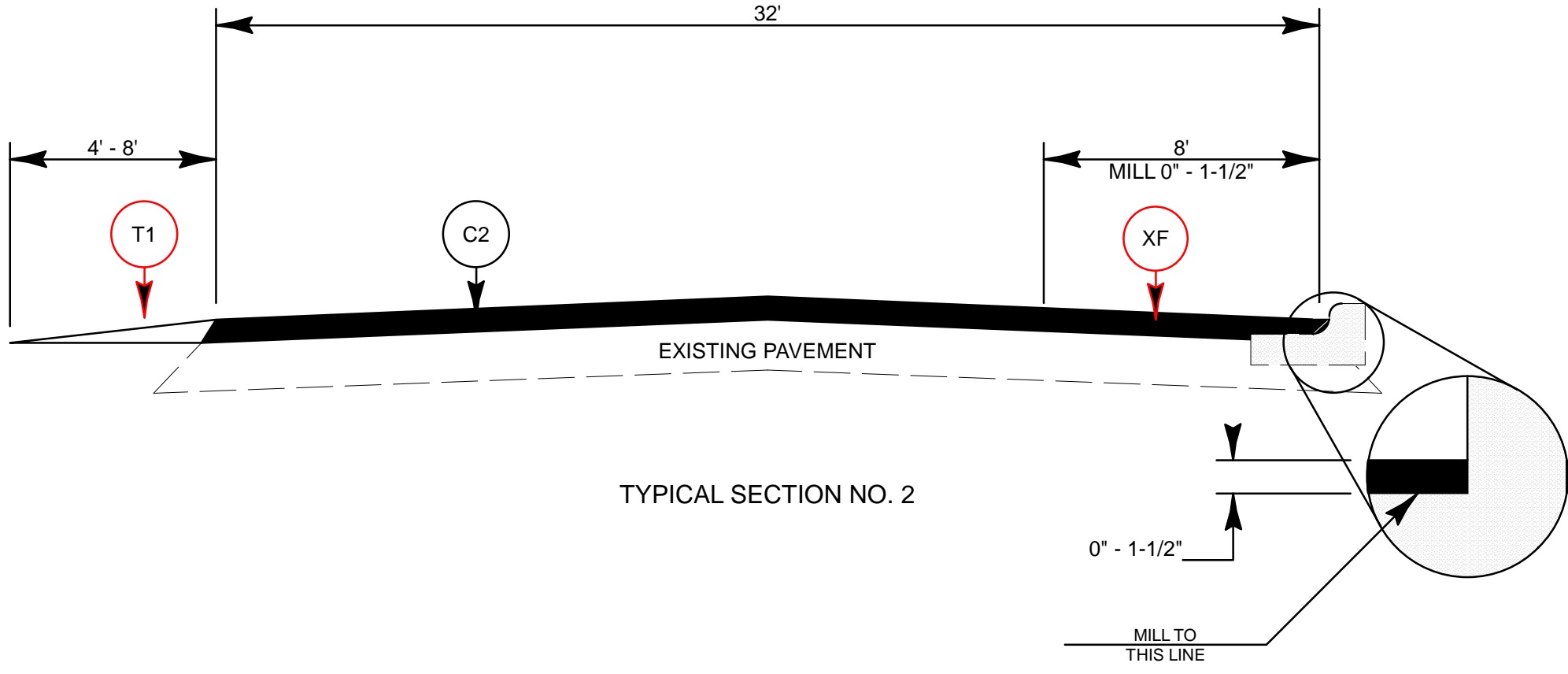
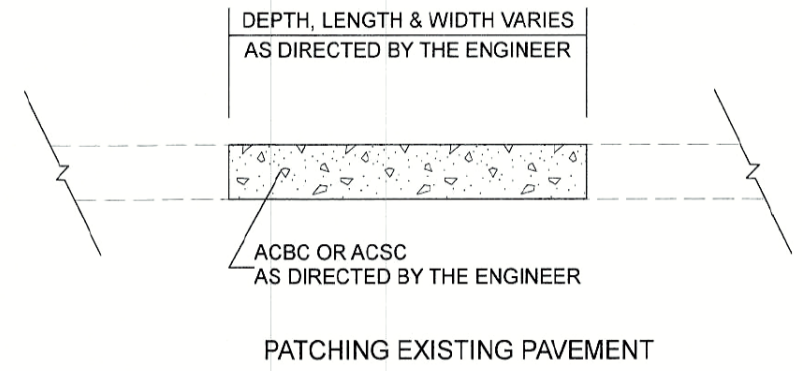
PROJECT NO.	SHEET NO.	TOTAL NO.
2019CPT.13.03.10571, 2019CPT.13.03.20571	3	17



MADISON COUNTY



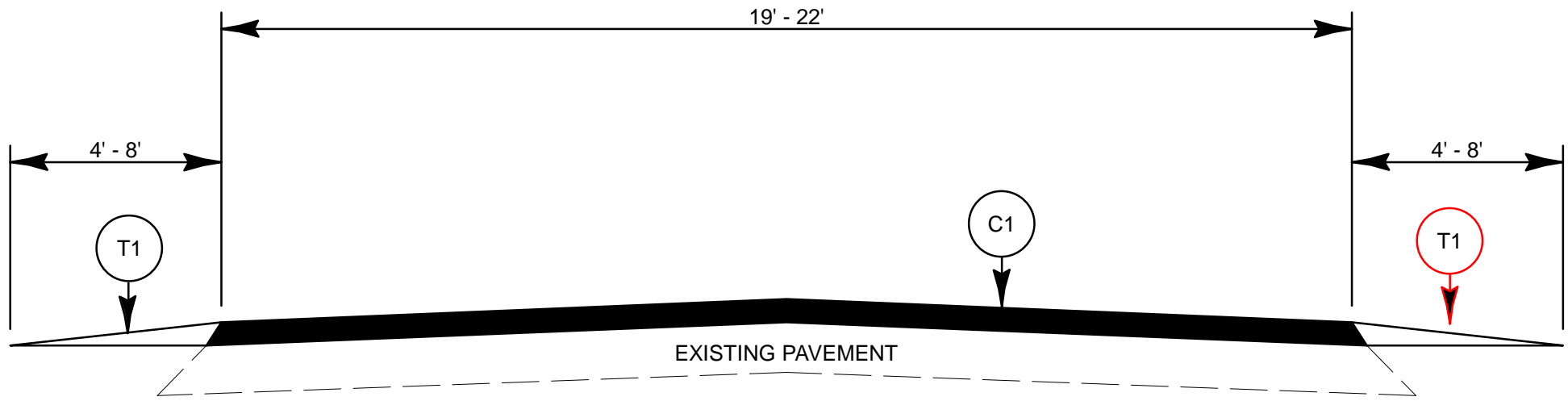
TYPICAL SECTION NO. 1



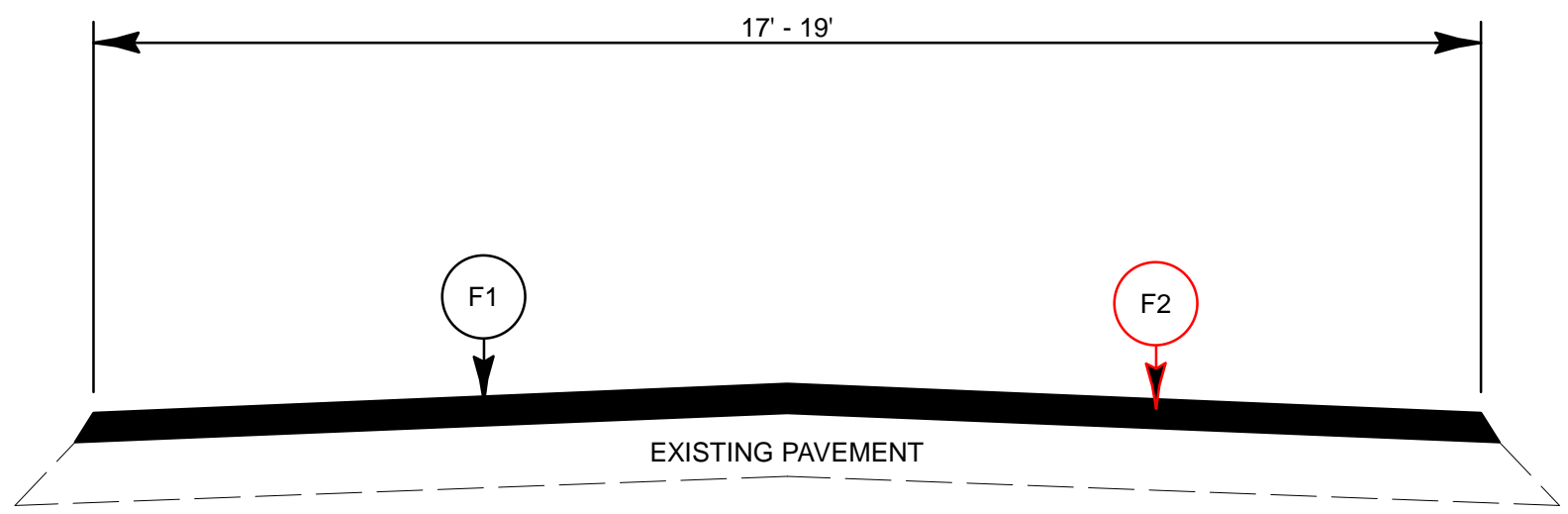
TYPICAL SECTION NO. 2

PAVEMENT SCHEDULE	
C1	PROP. APPROX. 1-1/2" ASPHALT CONCRETE SURFACE COURSE, TYPE S9.5B, AT AN AVERAGE RATE OF 165 LBS. PER SQ. YARD
C2	PROP. APPROX. 1-1/2" ASPHALT CONCRETE SURFACE COURSE, TYPE S9.5C, AT AN AVERAGE RATE OF 168 LBS. PER SQ. YARD
F1	ASPHALT SURFACE TREATMENT, DOUBLE SEAL
F2	ASPHALT SURFACE TREATMENT, FOG SEAL
T1	SHOULDER RECONSTRUCTION
V1	MILLING ASPHALT PAVEMENT, 0 TO 1-1/2" DEPTH
V2	INCIDENTAL MILLING
V3	MILLING ASPHALT PAVEMENT, 1-1/2" DEPTH
Y1	LATEX MODIFIED MICRO-SURFACING, TYPE III

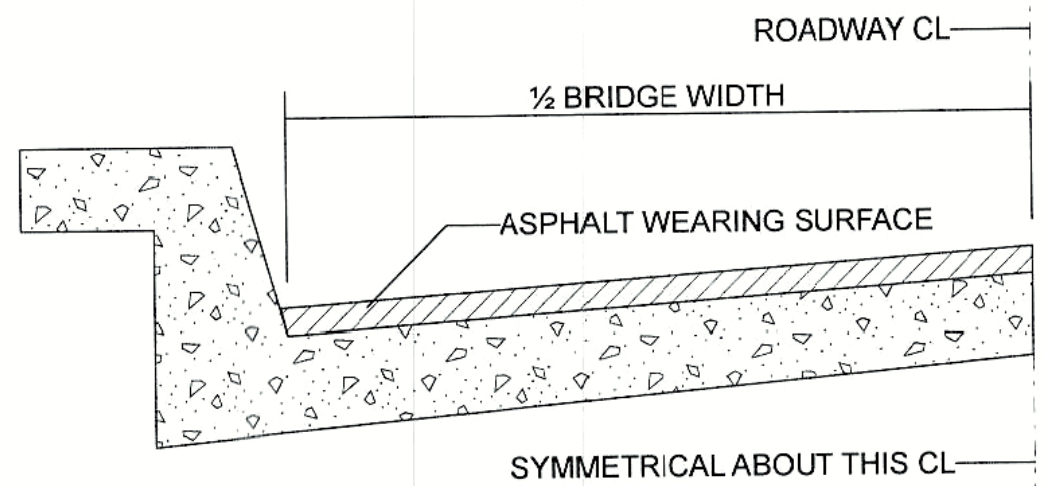
PROJECT NO.	SHEET NO.	TOTAL NO.
2019CPT.13.03.10571, 2019CPT.13.03.20571	5	17



TYPICAL SECTION NO. 3



TYPICAL SECTION NO. 4



BRIDGE HALF TYPICAL SECTION

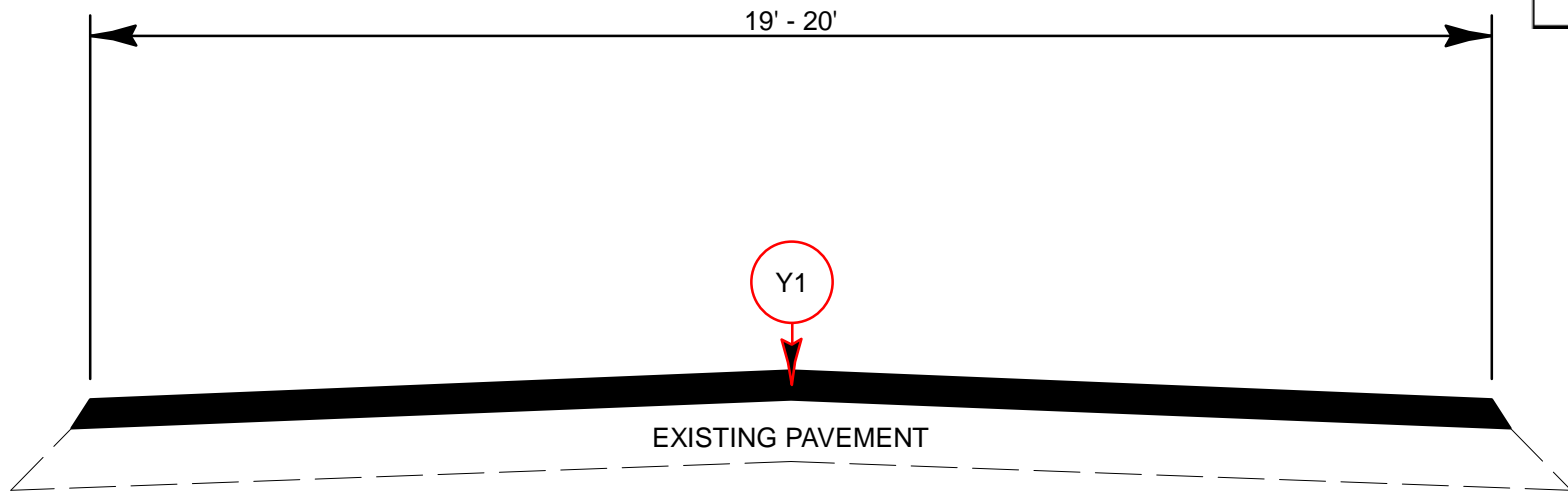
FOR BRIDGES WITH FLOOR DRAINS, CARE SHALL BE EXERCISED IN PLACING THE WEARING SURFACE AROUND FLOOR DRAINS SO AS NOT TO HINDER EFFECTIVE DRAINAGE. ALL DRAINS SHALL BE LEFT OPEN

THE PROPOSED WEARING SURFACE SHALL VARY IN THICKNESS AS NECESSARY TO PROVIDE A SMOOTH RIDING SURFACE. THE MINIMUM THICKNESS SHOULD DEPEND ON PAVEMENT TYPE AS FOLLOWS: S4.75A 1/2", SF9.5A 1.0", S9.5X 1.5", S12.5X 2.0", ULTRATHIN HOT MIX ASPHALT-TYPE A 3/4", ULTRATHIN HOT MIX ASPHALT-TYPE B 5/8", ULTRATHIN HOT MIX ASPHALT-TYPE C 1/2". THE MAXIMUM THICKNESS SHOULD DEPEND ON PAVEMENT TYPE AS FOLLOWS: S4.75A 1.0", SF9.5A 1.5", S9.5X 2.0", S12.5X 2.0", ULTRATHIN HOT MIX ASPHALT-TYPE A 3/4", ULTRATHIN HOT MIX ASPHALT-TYPE B 5/8", ULTRATHIN HOT MIX ASPHALT-TYPE C 1/2".

NOTES

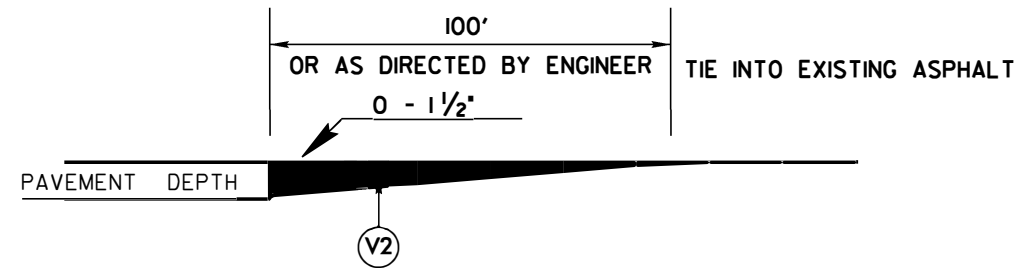
- ALL UNPAVED ROADS TO BE RESURFACED 50' FROM EDGE OF PAVEMENT OF MAIN PROJECT.
- ALL PAVED S.R. ROADS TO BE RESURFACED TO THE ENDS OF THE RADII, OR AS DIRECTED BY THE ENGINEER.
- EDGES, PAVEMENT WIDENING, INTERSECTIONS AND BRIDGE FLARES ARE INCLUDED IN THE TABLE OF QUANTITIES.
- ~~SHOULDER AND DITCHES ARE TO BE CONSTRUCTED BY OTHERS UNLESS OTHERWISE INDICATED.~~
- BRIDGES ARE TO BE RESURFACED AT LOCATIONS AND TO DEPTH AS DIRECTED BY THE ENGINEER.

PROJECT NO.	SHEET NO.	TOTAL NO.
2019CPT.13.03.10571, 2019CPT.13.03.20571	6	17



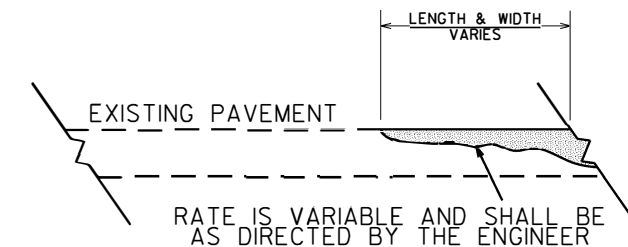
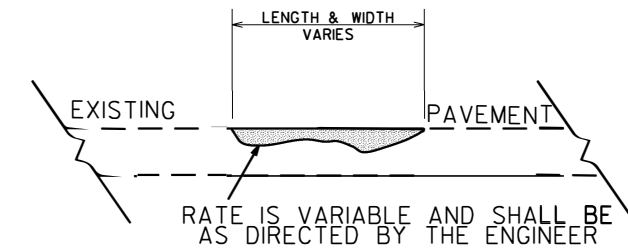
TYPICAL SECTION NO. 5

PROJECT NO.	SHEET NO.	TOTAL NO.
2019CPT.13.03.10571, 2019CPT.13.03.20571	7	17

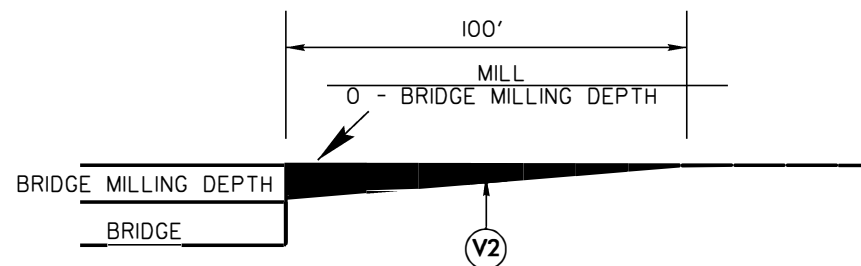


DETAIL TO TIE INTO EXIST PAVEMENT

THE CONTRACTOR'S ATTENTION IS DIRECTED TO THE FACT THAT HE WILL BE REQUIRED TO MILL THE EXISTING ASPHALT PAVEMENT TO ENSURE A PROPER TIE-IN WITH THE EXISTING SURFACE AT THE BEGINNING, END AND Y LINES OF EACH MAP TO BE RESURFACED WITH ASPHALT CONC SURFACE COURSE, TYPE S9.5C. THIS WILL BE PAID FOR AS INCIDENTAL MILLING.

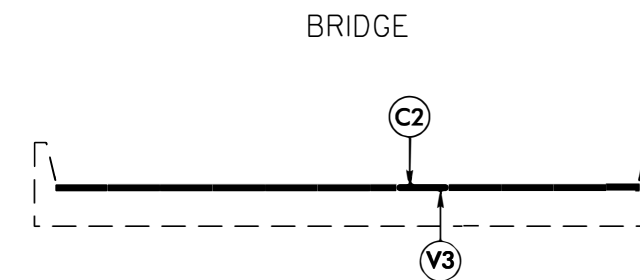


DETAIL SHOWING METHOD OF WEDGING



MILLING DETAIL AT BRIDGE APPROACHES

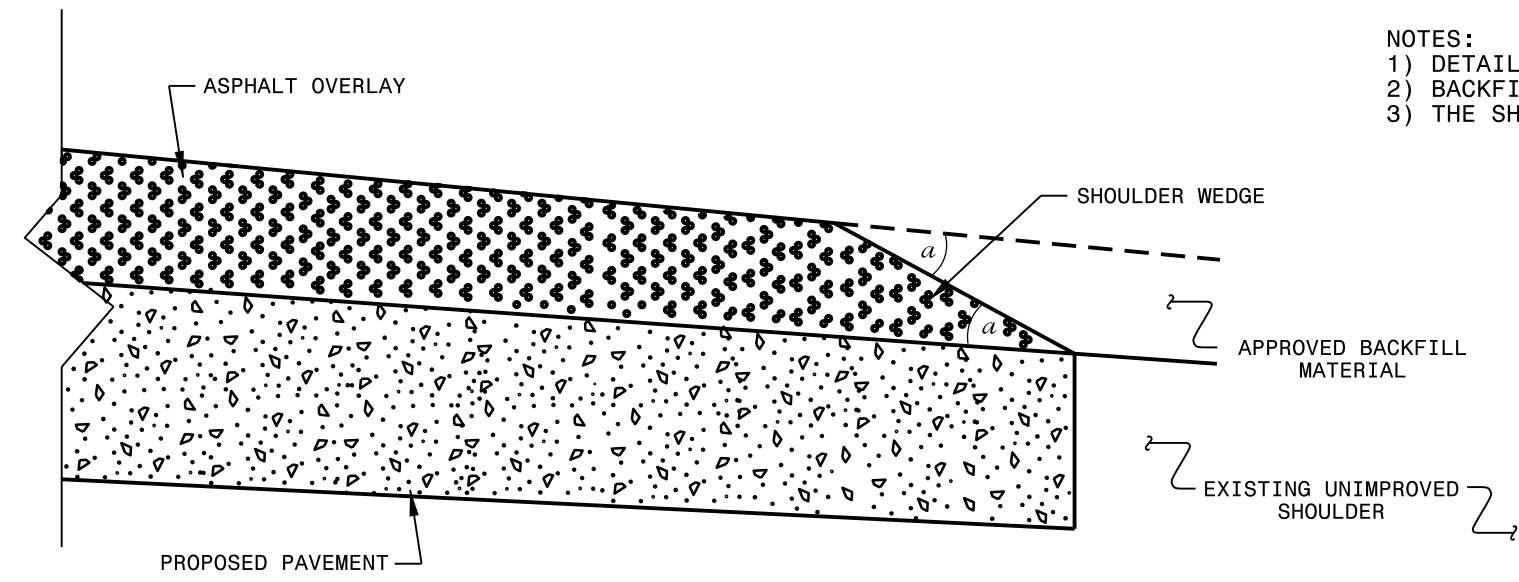
WHERE BRIDGES WILL BE MILLED THEN RESURFACED. THIS WILL BE PAID FOR AS INCIDENTAL MILLING. USE AT BRIDGE NUMBERS: 45 MAP 1, 84 MAP 2, 67 MAP 3, AND 243 MAP 9.



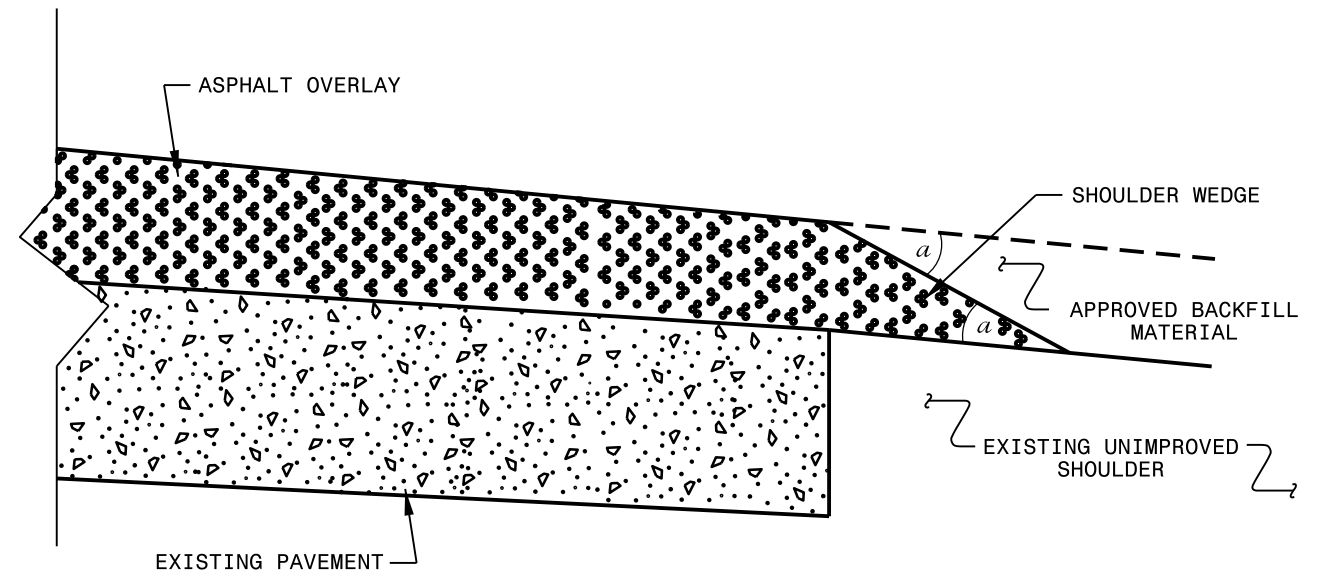
BRIDGE DETAIL

BRIDGE 45 MAP 1, 84 MAP 2, 67 MAP 3, AND 243 MAP 9. MILL 1-1/2" OFF EXISTING PAVEMENT SEE MAPS FOR BRIDGE LOCATION

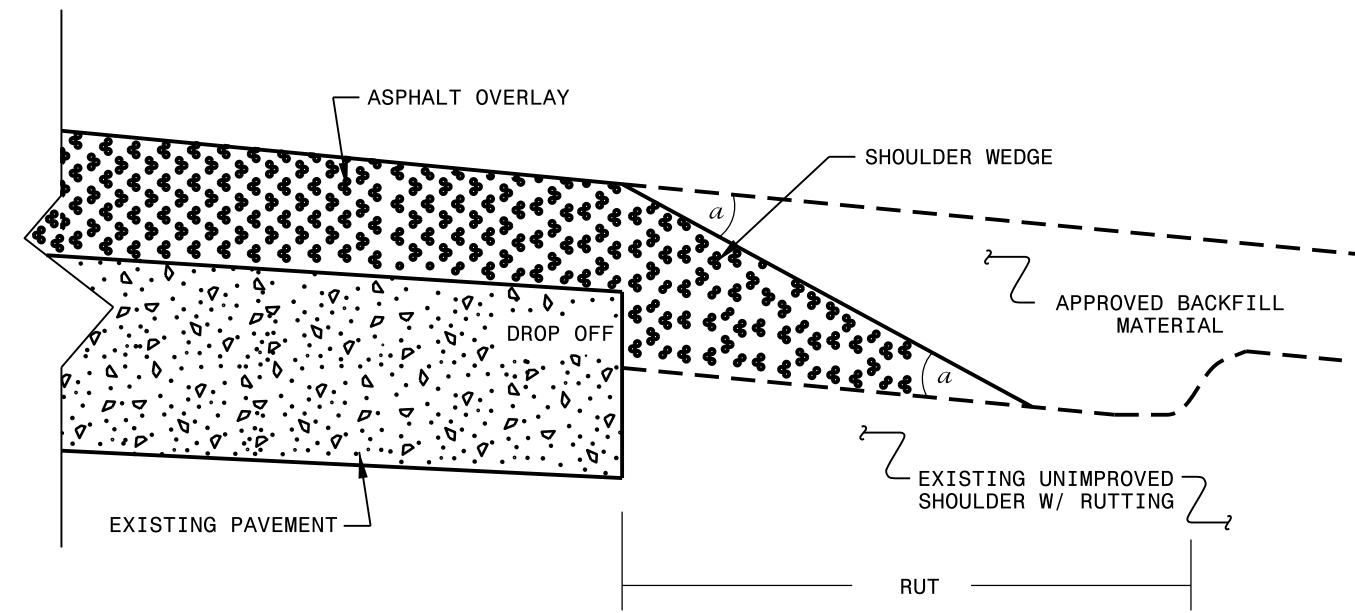
- NOTES:
- 1) DETAIL DOES NOT APPLY TO OGAFD AND ULTRA-THIN BONDED WEARING COURSE.
 - 2) BACKFILL SHOULDER WITH APPROVED MATERIAL.
 - 3) THE SHOULDER WEDGE DEVICE MAY BE DISENGAGED AT PAVED DRIVEWAYS AND SIDE STREETS.



SHOULDER WEDGE DETAIL
 (Resurfacing Projects w/ Widening or
 with Existing Paved Shoulder having no dropoffs)



SHOULDER WEDGE DETAIL
 (Resurfacing Projects w/ NO Widening)



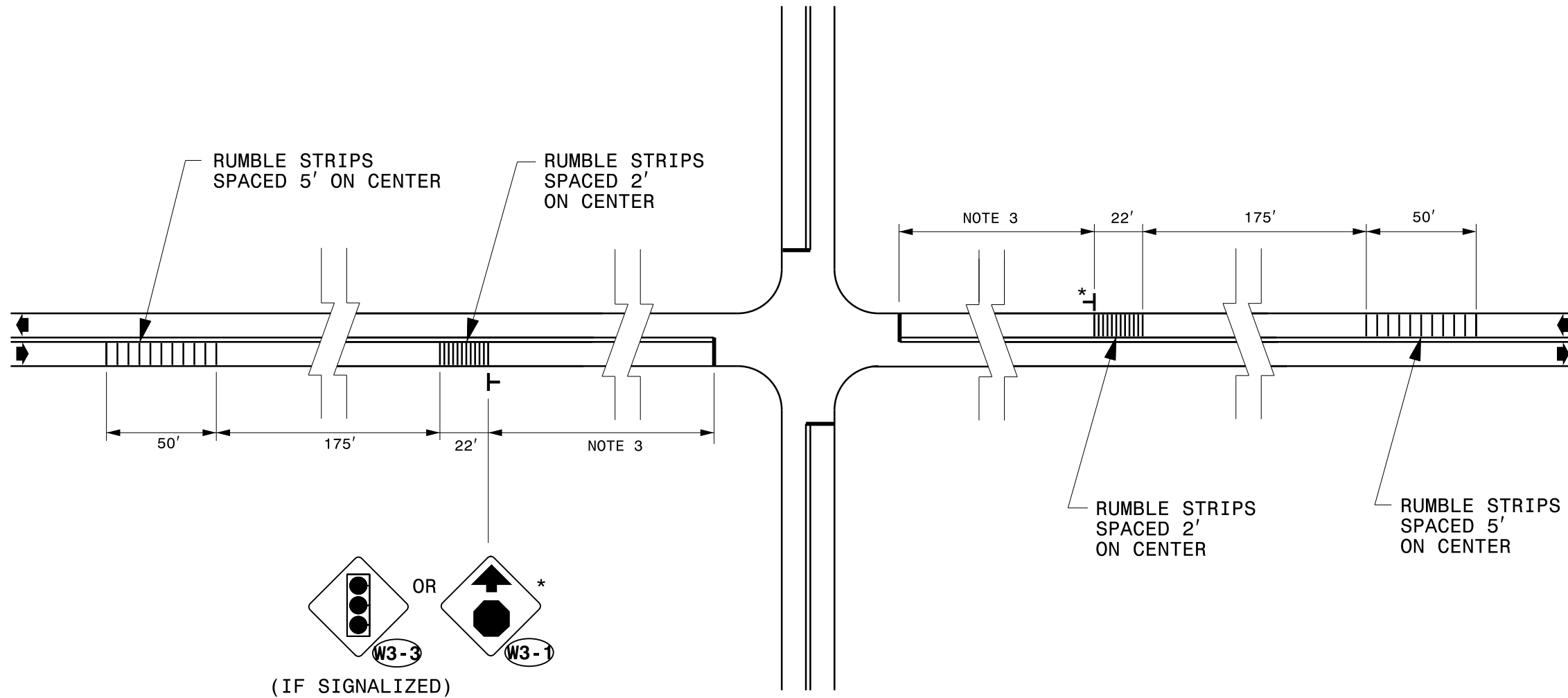
SHOULDER WEDGE DETAIL
 (Resurfacing Adjacent to
 Rutted Shoulder)

- SHOULDER WEDGE ANGLE = 30°

CONTRACT STANDARDS AND DEVELOPMENT UNIT	
Office 919-707-6950	FAX 919-250-4119
SHOULDER WEDGE DETAILS	
ORIGINAL BY: T.SPELL	DATE: 7-19-11
MODIFIED BY:	DATE: 10/16/12
CHECKED BY:	DATE:
FILE SPEC.: susr/details/stand/shoulderwedgedetail.dgn	

SYSTEM: 11/15/11 10:58:58 AM
 USER: T.SPELL
 FILE: susr/details/stand/shoulderwedgedetail.dgn

PROJECT NO.	SHEET NO.	TOTAL NO.
2019CPT.13.03.10571, 2019CPT.13.03.20571	9	17



GENERAL NOTES:

1. ALL RUMBLE STRIPS SHALL BE CENTERED IN THE LANE AND SHALL BE 2 FEET LESS THAN THE WIDTH OF THE TRAVEL LANE
2. RUMBLE STRIPS SHALL BE PLACED USING 4" x 240 MIL WHITE THERMOPLASTIC PAVEMENT MARKING MATERIAL.
3. PLACEMENT OF STOP-AHEAD (W3-1) OR SIGNAL-AHEAD (W3-3) SIGNS SHALL COMPLY WITH THE 2009 MUTCD SECTION 5C.04.

SIGN NUMBER: 11299

BACKG COLOR: Fluorescent Orange

DESIGN BY: WJ

CHECKED BY:

DATE: Jun 22, 2011

TYPE: B

COPY COLOR: Black

PROJECT ID: ALL

DIV: ALL

QUANTITY: SEE PLANS

SYMBOL	X	Y	WID	HT

SIGN WIDTH: 5'-6"

HEIGHT: 5'-6"

SP 11299

PROJECT NO.	SHEET NO.	TOTAL NO.
2019CPT.13.03.10571, 2019CPT.13.03.20571	10	17

TOTAL AREA: 30.5 Sq.Ft.

BORDER TYPE: INSET

RECESS: 0.59"

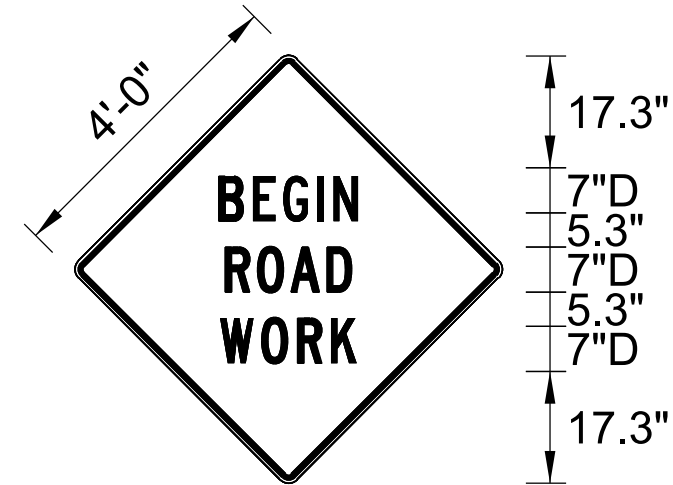
WIDTH: 0.75"

RADII: 1.38"

NO. Z BARS: N/A

LENGTH: N/A

MAT'L: 0.125" (3.2 mm) ALUMINUM



BORDER
R=1.38"
TH=0.75"
IN=0.59"

Spacing Factor is 1 unless specified otherwise

USE NOTES: 1,2

- Legend and border shall be direct applied black non-reflective sheeting.
- Background shall be Type VII, VIII, or IX (prismatic) fluorescent orange retroreflective sheeting.

LETTER POSITIONS

Letter spacings are to start of next letter																	Series/Size	
																	Text Length	
		B	E	G	I	N												D 2000
20.5	6	5.4	6.3	2.8	4.8	20.5												25.2
		R	O	A	D													D 2000
21.4	5.8	5.9	7	4.8	21.4													23.5
		W	O	R	K													D 2000
20.9	7.1	6.5	5.9	4.9	20.9													24.5

SIGN NUMBER: SP13106
 TYPE: STATIONARY
 QUANTITY: SEE PLANS

BACKG COLOR: Fluorescent Orange
 COPY COLOR: Black

DESIGN BY: B. RASHID
 PROJECT ID:

CHECKED BY: AIA
 DIV:

DATE: Apr 26, 2013

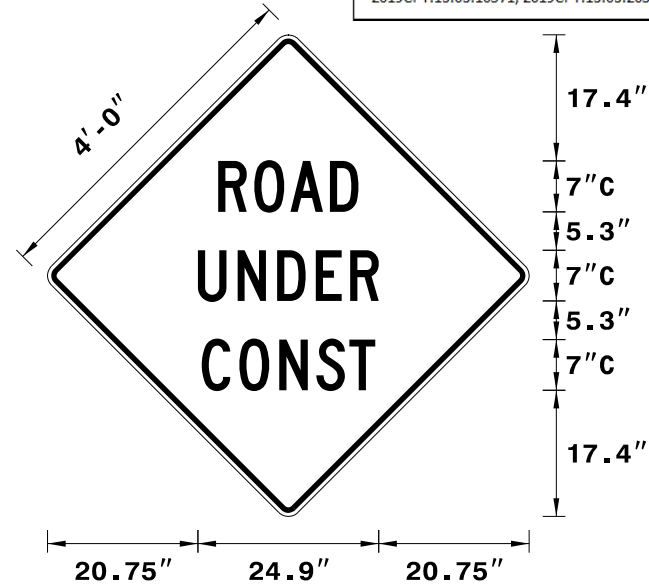
SYMBOL	X	Y	WID	HT

MAT'L: 0.080" (2.0 mm) ALUMINUM

BORDER TYPE: INSET
 RECESS: 0.75"
 WIDTH: 1.25"
 RADII: 3"

NO. Z BARS:
 LENGTH:

PROJECT NO.	SHEET NO.	TOTAL NO.
2019CPT.13.03.10571, 2019CPT.13.03.20571	11	17



Spacing Factor is 1 unless specified otherwise

USE NOTES: 1,2

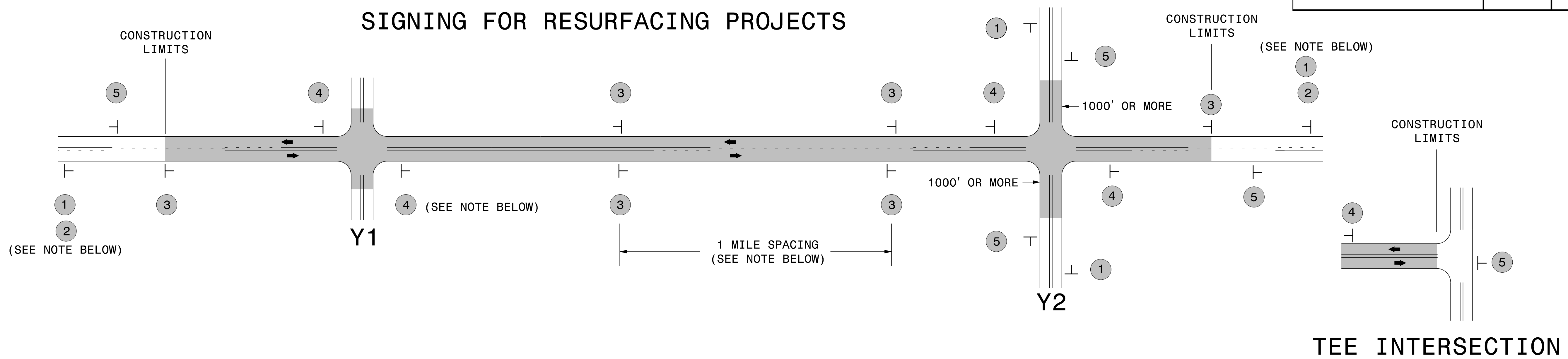
- Legend and border shall be direct applied black non-reflective sheeting.
- Background shall be NC GRADE B fluorescent orange retroreflective sheeting.

LETTER POSITIONS

Letter spacings are to start of next letter

Letter spacings are to start of next letter																		Series/Size Text Length
		R	O	A	D													C 2000
	23.5	5	5	5.5	3.9	23.5												19.3
		U	N	D	E	R												C 2000
	20.7	5.5	5.5	5.3	4.8	3.9	20.7											24.9
		C	O	N	S	T												C 2000
	21.2	5.2	5.5	5.1	4.6	3.6	21.2											23.9

SIGNING FOR RESURFACING PROJECTS



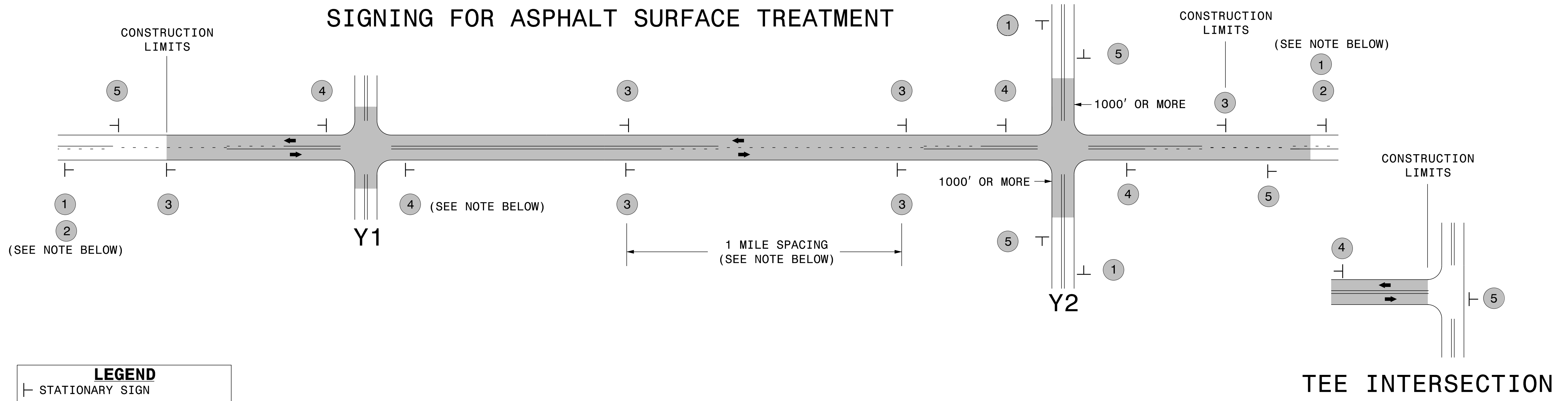
LEGEND	
┆	STATIONARY SIGN
←	DIRECTION OF TRAFFIC FLOW

MAINLINE (-L-) SIGNING

-Y- LINE SIGNING

SIGNING NOTES AND PLACEMENT PER DIRECTION	1	2	3	4	5	
						<p>NO REQUIRED STATIONARY SIGNING FOR THE FOLLOWING -Y- LINE CONDITIONS:</p> <ol style="list-style-type: none"> 1) LESS THAN 1000' OF RESURFACING ALONG -Y- LINE 2) SUBDIVISION ROADS 3) DEAD END ROADS <p>WHEN PAVING/CONSTRUCTION ACTIVITIES PROCEED ACROSS AN UNSIGNED -Y- LINE, ADVANCE WARNING PORTABLE SIGNS SHALL BE USED ALONG THE -Y- LINE AS SHOWN BELOW. REMOVE UPON COMPLETION OF WORK.</p> <p> </p> <p>PLACED 500' IN ADVANCE OF FLAGGER. PLACED 250' IN ADVANCE OF FLAGGER.</p>
	PLACE 1000' PRIOR TO BEGINNING OF CONSTRUCTION LIMITS. ONLY USED ON -Y- LINES IF RESURFACING LIMITS EXTEND 1000' ALONG -Y- LINE.	#2 SIGN ONLY USED WHEN RESURFACING LIMITS ARE 2 OR MORE MILES IN LENGTH. ROUND UP TO NEXT WHOLE NUMBER. (NO FRACTIONAL OR DECIMAL NUMBERS)	- PLACE INITIALLY AT THE CONSTRUCTION LIMITS AND SPACE 1 MILE APART THEREAFTER. - AT TEE INTERSECTIONS INSTALL INITIALLY 0.5 MILE FROM INTERSECTION AND SPACE 1 MILE APART THEREAFTER.	- THESE ARE FOR -Y- LINES THAT ARE "THROUGH" ROADWAYS. - DEAD END AND SUBDIVISION ROADS ARE NOT "THROUGH" ROADWAYS. - INSTALL 500' +/- FROM EACH -Y- LINE APPROACH AS SHOWN ABOVE. - FOR MULTIPLE -Y- LINES THAT ARE SEPARATED BY 0.25 MILES OR LESS, TREAT AS A SINGLE UNIT AND INSTALL WITHIN 500' OF EACH APPROACH. - A MAXIMUM OF 2 SIGN SETS PER MILE. DO NOT INSTALL WHEN -Y- LINES ARE WITHIN 0.5 MILES FROM "END ROAD WORK" SIGN. - FOR TEE INTERSECTIONS, INSTALL WITHIN 500' +/- OF THE INTERSECTION ALONG -L- LINE.	PLACE 500' FOLLOWING THE END OF CONSTRUCTION LIMITS OR AS SHOWN WHEN WORK ENDS AT A 3-WAY TEE INTERSECTION.	

**RESURFACING
ADVANCE WARNING SIGNS
FOR
RURAL AND SUBURBAN
2 LANE ROADWAYS**

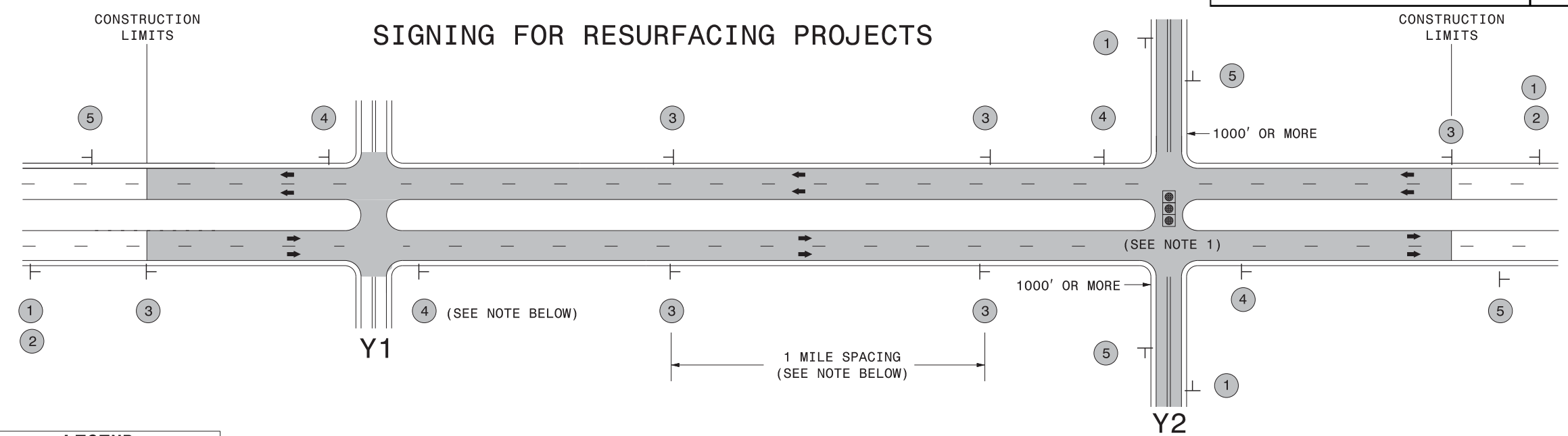


MAINLINE (-L-) SIGNING

-Y- LINE SIGNING

SIGNING NOTES AND PLACEMENT PER DIRECTION	1	 <small>W20-1 48" X 48"</small>	PLACE 1000' PRIOR TO BEGINNING OF CONSTRUCTION LIMITS. ONLY USED ON -Y- LINES IF RESURFACING LIMITS EXTEND 1000' ALONG -Y- LINE.	<p style="text-align: center;">NO REQUIRED STATIONARY SIGNING FOR THE FOLLOWING -Y- LINE CONDITIONS:</p> <ol style="list-style-type: none"> 1) LESS THAN 1000' OF RESURFACING ALONG -Y- LINE 2) SUBDIVISION ROADS 3) DEAD END ROADS <p style="text-align: center;">WHEN PAVING/CONSTRUCTION ACTIVITIES PROCEED ACROSS AN UNSIGNED -Y- LINE, ADVANCE WARNING PORTABLE SIGNS SHALL BE USED ALONG THE -Y- LINE AS SHOWN BELOW. REMOVE UPON COMPLETION OF WORK.</p> <div style="display: flex; justify-content: space-around; align-items: center;"> <div style="text-align: center;"> <small>W20-1 48" X 48"</small> </div> <div style="text-align: center;"> <small>W20-7 A 48" X 48"</small> </div> </div> <p style="text-align: center;">PLACED 500' IN ADVANCE OF FLAGGER. PLACED 250' IN ADVANCE OF FLAGGER.</p>
	2	 <small>W7-3aP 24" X 18"</small>	#2 SIGN ONLY USED WHEN RESURFACING LIMITS ARE 2 OR MORE MILES IN LENGTH. ROUND UP TO NEXT WHOLE NUMBER. (NO FRACTIONAL OR DECIMAL NUMBERS)	
	3	 <small>W8-7 48" X 48"</small>	- ALTERNATE THE FOLLOWING TWO SIGNS: - STARTING WITH "LOOSE GRAVEL" (W8-7) FOLLOWED BY "UNMARKED PAVEMENT". - PLACE INITIALLY AT THE CONSTRUCTION LIMITS AND SPACED 1 MILE APART THEREAFTER. - AT TEE INTERSECTIONS INSTALL INITIALLY 0.5 MILE FROM INTERSECTION AND SPACE 1 MILE APART THEREAFTER.	
		 <small>SP 48" X 48"</small>		
	4	 <small>SP 13106 48" X 48"</small>	- THESE ARE FOR -Y- LINES THAT ARE "THROUGH" ROADWAYS. - DEAD END AND SUBDIVISION ROADS ARE NOT "THROUGH" ROADWAYS. - INSTALL 500' +/- FROM EACH -Y- LINE APPROACH AS SHOWN ABOVE. - FOR MULTIPLE -Y- LINES THAT ARE SEPARATED BY 0.25 MILES OR LESS, TREAT AS A SINGLE UNIT AND INSTALL WITHIN 500' OF EACH APPROACH. - A MAXIMUM OF 2 SIGN SETS PER MILE. DO NOT INSTALL WHEN -Y- LINES ARE WITHIN 0.5 MILES FROM "END ROAD WORK" SIGN. - FOR TEE INTERSECTIONS, INSTALL WITHIN 500' +/- OF THE INTERSECTION ALONG -L- LINE.	
5	 <small>G20-2 A 48" X 24"</small>	PLACE 500' FOLLOWING THE END OF CONSTRUCTION LIMITS OR AS SHOWN WHEN WORK ENDS AT A 3-WAY TEE INTERSECTION.		

**ADVANCE WARNING SIGNS
FOR
ASPHALT SURFACE TREATMENTS
2 LANE ROADWAYS**



LEGEND
 ┆ STATIONARY SIGN
 ← DIRECTION OF TRAFFIC FLOW

MAINLINE (-L-) SIGNING

-Y- LINE SIGNING

SIGNING NOTES AND PLACEMENT PER DIRECTION	①		PLACE 1000' PRIOR TO BEGINNING OF CONSTRUCTION LIMITS. ONLY USED ON -Y- LINES IF RESURFACING LIMITS EXTEND 1000' ALONG -Y- LINE.	<p>NO REQUIRED STATIONARY SIGNING FOR THE FOLLOWING -Y- LINE CONDITIONS:</p> <ol style="list-style-type: none"> 1) LESS THAN 1000' OF RESURFACING ALONG -Y- LINE 2) SUBDIVISION ROADS 3) DEAD END ROADS <p>WHEN PAVING/CONSTRUCTION ACTIVITIES PROCEED ACROSS AN UNSIGNED -Y- LINE, ADVANCE WARNING PORTABLE SIGNS SHALL BE USED ALONG THE -Y- LINE AS SHOWN BELOW. REMOVE UPON COMPLETION OF WORK.</p> <div style="display: flex; justify-content: space-around;"> <div style="text-align: center;"> <small>W20-1 48" X 48"</small> </div> <div style="text-align: center;"> <small>W20-7 A 48" X 48"</small> </div> </div> <p>PLACED 500' IN ADVANCE OF FLAGGER. PLACED 250' IN ADVANCE OF FLAGGER.</p>
	②		#2 SIGN ONLY USED WHEN RESURFACING LIMITS ARE 2 OR MORE MILES IN LENGTH. ROUND UP TO NEXT WHOLE NUMBER. (NO FRACTIONAL OR DECIMAL NUMBERS)	
	③		PLACE INITIALLY AT THE CONSTRUCTION LIMITS AND SPACED 1 MILE APART THEREAFTER. IF NO -Y- LINES EXIST, PLACE 2ND SET 1/2 MILE FROM THE CONSTRUCTION LIMITS AND THEN SPACE 1 MILE THEREAFTER.	
	④		THESE ARE FOR -Y- LINES THAT ARE "THROUGH" ROADWAYS. DEAD END AND SUBDIVISION ROADS ARE NOT "THROUGH" ROADWAYS. INSTALL 500' +/- FROM EACH -Y- LINE APPROACH AS SHOWN ABOVE. FOR MULTIPLE -Y- LINES THAT ARE SEPARATED BY 0.25 MILES OR LESS, TREAT AS A SINGLE UNIT AND INSTALL WITHIN 500' OF EACH APPROACH. A MAXIMUM OF 2 SIGN SETS PER MILE. DO NOT INSTALL WHEN -Y- LINES ARE WITHIN 0.5 MILES FROM "END ROAD WORK" SIGN.	
⑤		PLACE 500' FOLLOWING THE END OF CONSTRUCTION LIMITS.	<p>NOTES:</p> <ol style="list-style-type: none"> 1) MAY USE LAW ENFORCEMENT TO CONTROL TRAFFIC AT SIGNALIZED INTERSECTIONS AS DIRECTED BY THE ENGINEER. PROVIDE PORTABLE "ROAD WORK AHEAD" (W20-1) SIGNS 500' IN ADVANCE ALONG BOTH APPROACHES FROM THE SIDE STREETS WHEN PAVING PROCEEDS THROUGH THE INTERSECTION. 	

**RESURFACING
ADVANCE WARNING SIGNS
FOR RURAL AND SUBURBAN
MULTI-LANE ROADWAYS
W/ SHOULDER SECTIONS**

PROJECT NO.	SHEET NO.	TOTAL NO.
2019CPT.13.03.10571, 2019CPT.13.03.20571	16	17

SUMMARY OF QUANTITIES

PROJECT NO	COUNTY	MAP NO	ROUTE	DESCRIPTION	TYP NO	LANES	LANE TYPE	FINAL SURFACE TESTING REQUIRED	WARM MIX ASPHALT REQUIRED	LENGTH	WIDTH	1220000000-E	1245000000-E	1260000000-E	1297000000-E	1308000000-E	1330000000-E	1519000000-E	1523000000-E	1575000000-E	1704000000-E	1803500000-E	1820000000-E	1838000000-E	1838500000-N	1891000000-E	2605000000-N									
												INCIDENTAL STONE BASE	SHOULDER RECONSTRUCTION	AGGREGATE SHOULDER BORROW	MILLING ASPHALT PAVEMENT, 1-1/2" DEPTH	MILLING ASPHALT PAVEMENT, 0" TO 1-1/2" DEPTH	INCIDENTAL MILLING	ASPHALT CONC SURFACE COURSE, TYPE S9.5B	ASPHALT CONC SURFACE COURSE, TYPE S9.5C	ASPHALT BINDER FOR PLANT MIX	PATCHING EXISTING PAVEMENT	ASPHALT SURFACE TREATMENT, DOUBLE SEAL	ASPHALT SURFACE TREATMENT, FOG SEAL	EMULSION FOR ASPHALT SURFACE TREATMENT	VACUUM TRUCK	LATEX MODIFIED MICRO-SURFACING, TYPE III	CONCRETE CURB RAMP									
											MI	FT	TON	SMI	TON	SY	SY	SY	TON	TON	TON	TON	SY	SY	GAL	WK	SY	EA								
2019CPT.13.03.10571	Madison	1	US 25-70	FROM NC 208 TO BEG PASSING LANE AT TOP OF THE MTN (MP 15.92 TO MP 17.85)	1	2	2WU	NO	NO	1.93	26	97	3.86	502	340	2,400	1,800		2,733	164	500															
2019CPT.13.03.10571	Madison	2	NC 209	FROM PVMNT JOINT NORTH OF SR 1175 TO PVMNT JOINT AT SPRING CREEK UNITED METHODIST CHURCH (MP 13.91 TO MP 8.63)	1	2	2WU	NO	NO	5.28	20	264	10.56	1,373	89		600		5,760	346	900															
2019CPT.13.03.10571	Madison	3	US 25/70	FROM THE END OF MAP 1 TO THE R/R TRACKS IN HOT SPRINGS (MP 17.85 TO MP 20.86)	1,2	2	2WU	NO	NO	3.01	34	151	6.02	783	1,560	4,150	712		5,568	334	300							7								
TOTAL FOR PROJ NO. 2019CPT.13.03.10571											10.22		512	20.44	2,658	1,989	6,550	3,112		14,061	844	1,700														7
2019CPT.13.03.20571	Madison	4	SR 1502	FROM SR 1503 TO SR 1501 (MP 0.01 TO MP 3.62)	3	2	2WD	NO	NO	3.61	22	181	7.22	939				4,330		260	650															
2019CPT.13.03.20571	Madison	5	SR 1531	FROM SR 1530 TO SR 1530 (MP 0.00 TO MP 4.25)	4	2	2WU	NO	NO	4.25	18						1,355				900	44,880	44,880	24,684												
2019CPT.13.03.20571	Madison	6	SR 1001	FROM BRIDGE #328 TO SR 1118 (MP 8.37 TO MP 5.94)	5	2	2WU	NO	NO	2.43	20											400					28,512									
2019CPT.13.03.20571	Madison	7	SR 1390	FROM NC 213 TO JOINT AT BRIDGE #59 (MP 1.47 TO MP 0.07)	3	2	2WU	NO	NO	1.4	20	70	2.80	364				1,527		92	400															
2019CPT.13.03.20571	Madison	8	SR 1501	FROM SR 1502 TO EOM (MP 0.01 TO MP 0.58)	3	2	2WU	NO	NO	0.57	21	28	1.14	148				653		39	175															
2019CPT.13.03.20571	Madison	9	SR 1503	FROM US 23 TO SR 1502 (MP 0.01 TO MP 0.24)	3	2	2WU	NO	NO	0.23	20	12	0.46	60	219			533	251	15	125															
2019CPT.13.03.20571	Madison	10	SR 1549	FROM SR 1631 TO NC 213 (MP 0.06 TO MP 1.41)	3	2	2WU	NO	NO	1.35	22	68	2.70	351				1,619		97	350															
2019CPT.13.03.20571	Madison	11	SR 1347	FROM US 23 TO EOP (MP 0.00 TO MP 2.15)	4	2	2WU	NO	NO	2.15	19										550	23,965	23,965	13,181												
2019CPT.13.03.20571	Madison	12	SR 1314	FROM SR 1316 TO NC 212 (MP 0.01 TO MP 3.43)	5	2	2WU	NO	NO	3.42	19										125					38,122										
2019CPT.13.03.20571	Madison	13	SR 1393	FROM US 25/70 TO SR 1198 (MP 0.76 TO MP 0.01)	4	2	2WU	NO	NO	0.75	18										150	7,920	7,920	4,356												
2019CPT.13.03.20571	Madison	14	SR 1530	FROM SR 1527 TO YANCEY COUNTY LINE (MP 5.37-MP 7.13)	3	2	2WU	NO	NO	1.76	19	88	3.52	458				1,825		109	700															
2019CPT.13.03.20571	Madison	15	SR 1399	FROM SR 1395 TO SR 1388 (MP 0.01 TO MP 1.31)	4	2	2WU	NO	NO	1.3	18										60	13,728	13,728	7,551												
2019CPT.13.03.20571	Madison	16	SR 1569	FROM SR 1570 TO SR 1574 (MP 1.4 TO MP 2.17P)	4	2	2WU	NO	NO	0.77	17										100	7,679	7,679	4,224												
2019CPT.13.03.20571	Madison	17	SR 1119	FROM SR 1118 TO SR 1116 (MP 0.00 TO MP 1.05)	4	2	2WU	NO	NO	1.05	18										300	11,088	11,088	6,099												
2019CPT.13.03.20571	Madison	18	SR 1458	FROM SR 1313 TO EOP (MP 0.00 TO MP 0.68)	4	2	2WU	NO	NO	0.68	17										50	6,782	6,782	3,730												
2019CPT.13.03.20571	Madison	19	SR 1505	FROM SR 1503 TO EOP (MP 0.00 TO MP 1.94)	4	2	2WU	NO	NO	1.94	18										700	20,486	20,486	11,268												
2019CPT.13.03.20571	Madison	20	SR 1502	FROM SR 1501 TO EOP (MP 3.62 TO MP 4.92)	3	2	2WU	NO	NO	1.3	21	65	2.60	338				1,489		89	600															
TOTAL FOR PROJ NO. 2019CPT.13.03.20571											28.96		512	20.44	2,658	219		1,888	11,694		701	6,335	136,528	136,528	75,093	7	66,634									
GRAND TOTAL											39.18		1,024	40.88	5,316	2,208	6,550	5,000	11,694	14,061	1,545	8,035	136,528	136,528	75,093	7	66,634	7								

PROJECT NO.	SHEET NO.	TOTAL NO.
2019CPT.13.03.10571, 2019CPT.13.03.20571	17	17

THERMOPLASTIC AND PAINT QUANTITIES

PROJECT NO	COUNTY	MAP NO	ROUTE	DESCRIPTION	TYP NO	LANES	LANE TYPE	LENGTH	WIDTH	4413000000-E	4457000000-N	4687000000-E	4705000000-E	4710000000-E	4721000000-E	4810000000-E		4847010000-E		4905000000-N			
										WORK ZONE ADVANCE/GENERAL WARNING SIGNING	TEMPORARY TRAFFIC CONTROL	THERMOPLASTIC PAVEMENT MARKING LINES (4", 240 MILS) WHITE	THERMOPLASTIC PAVEMENT MARKING LINES (16", 120 MILS) WHITE	THERMOPLASTIC PAVEMENT MARKING LINES (24", 120 MILS) WHITE	THERMOPLASTIC PAVEMENT MARKING CHARACTER (120 MILS) RXR	PAINT PAVEMENT MARKING LINES (4") WHITE	PAINT PAVEMENT MARKING LINES (4") YELLOW	POLYUREA PAVEMENT MARKING LINES WHITE (4", 20 MILS) (HIGHLY REFLECTIVE ELEMENTS)	POLYUREA PAVEMENT MARKING LINES YELLOW (4", 20 MILS) (HIGHLY REFLECTIVE ELEMENTS)	SNOWPLOWABLE PAVEMENT MARKERS			
									MI	FT	SF	LS	LF	LF	LF	EA	LF	LF	LF	EA			
2019CPT.13.03.10571	Madison	1	US 25-70	FROM NC 208 TO BEG PASSING LANE AT TOP OF THE MTN (MP 15.92 TO MP 17.85)	1	2	2WU	1.93	26			300						20,381	20,381	170			
2019CPT.13.03.10571	Madison	2	NC 209	FROM PVMNT JOINT NORTH OF SR 1175 TO PVMNT JOINT AT SPRING CREEK UNITED METHODIST CHURCH (MP 13.91 TO MP 8.63)	1	2	2WU	5.28	20	1,147	*							56,813	56,813	480			
2019CPT.13.03.10571	Madison	3	US 25/70	FROM THE END OF MAP 1 TO THE R/R TRACKS IN HOT SPRINGS (MP 17.85 TO MP 20.86)	1,2	2	2WU	3.01	34				40	132	4			44,000	32,550	814			
TOTAL FOR PROJ NO. 2019CPT.13.03.10571											1,147		300	40	132	4		121,194	109,744	1,464			
										230,938													
2019CPT.13.03.20571	Madison	4	SR 1502	FROM SR 1503 TO SR 1501 (MP 0.01 TO MP 3.62)	3	2	2WD	3.61	22	3,251	*						76,243	76,243					
2019CPT.13.03.20571	Madison	5	SR 1531	FROM SR 1530 TO SR 1530 (MP 0.00 TO MP 4.25)	4	2	2WU	4.25	18										89,760	89,760			
2019CPT.13.03.20571	Madison	6	SR 1001	FROM BRIDGE #328 TO SR 1118 (MP 8.37 TO MP 5.94)	5	2	2WU	2.43	20										51,322	51,322			
2019CPT.13.03.20571	Madison	7	SR 1390	FROM NC 213 TO JOINT AT BRIDGE #59 (MP 1.47 TO MP 0.07)	3	2	2WU	1.4	20										29,568	29,568			
2019CPT.13.03.20571	Madison	8	SR 1501	FROM SR 1502 TO EOM (MP 0.01 TO MP 0.58)	3	2	2WU	0.57	21										12,038	12,038			
2019CPT.13.03.20571	Madison	9	SR 1503	FROM US 23 TO SR 1502 (MP 0.01 TO MP 0.24)	3	2	2WU	0.23	20										4,858	4,858			
2019CPT.13.03.20571	Madison	10	SR 1549	FROM SR 1631 TO NC 213 (MP 0.06 TO MP 1.41)	3	2	2WU	1.35	22										28,512	28,512			
2019CPT.13.03.20571	Madison	11	SR 1347	FROM US 23 TO EOP (MP 0.00 TO MP 2.15)	4	2	2WU	2.15	19										45,408	45,408			
2019CPT.13.03.20571	Madison	12	SR 1314	FROM SR 1316 TO NC 212 (MP 0.01 TO MP 3.43)	5	2	2WU	3.42	19										72,230	72,230			
2019CPT.13.03.20571	Madison	13	SR 1393	FROM US 25/70 TO SR 1198 (MP 0.76 TO MP 0.01)	4	2	2WU	0.75	18										15,840	15,840			
2019CPT.13.03.20571	Madison	14	SR 1530	FROM SR 1527 TO YANCEY COUNTY LINE (MP 5.37-MP 7.13)	3	2	2WU	1.76	19										37,171	37,171			
2019CPT.13.03.20571	Madison	15	SR 1399	FROM SR 1395 TO SR 1388 (MP 0.01 TO MP 1.31)	4	2	2WU	1.3	18										27,456	27,456			
2019CPT.13.03.20571	Madison	16	SR 1569	FROM SR 1570 TO SR 1574 (MP 1.4 TO MP 2.17P)	4	2	2WU	0.77	17										16,262	16,262			
2019CPT.13.03.20571	Madison	17	SR 1119	FROM SR 1118 TO SR 1116 (MP 0.00 TO MP 1.05)	4	2	2WU	1.05	18										22,176	22,176			
2019CPT.13.03.20571	Madison	18	SR 1458	FROM SR 1313 TO EOP (MP 0.00 TO MP 0.68)	4	2	2WU	0.68	17														
2019CPT.13.03.20571	Madison	19	SR 1505	FROM SR 1503 TO EOP (MP 0.00 TO MP 1.94)	4	2	2WU	1.94	18										40,973	40,973			
2019CPT.13.03.20571	Madison	20	SR 1502	FROM SR 1501 TO EOP (MP 3.62 TO MP 4.92)	3	2	2WU	1.3	21										27,456	27,456			
TOTAL FOR PROJ NO. 2019CPT.13.03.20571													28.96		3,251				597,273	597,273			
												1,194,546											
GRAND TOTAL													39.18		4,398	1	300	40	132	4	597,273	597,273	121,194
										230,938													